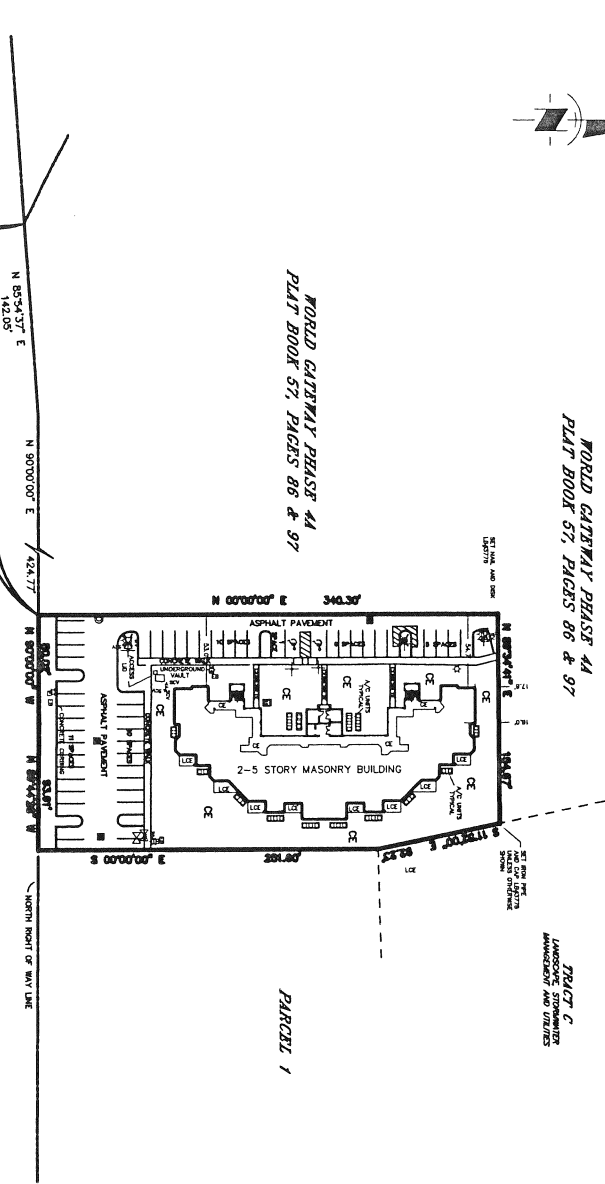


PHASE SIX  
WORLDQUEST RESORT, A CONDOMINIUM  
LYING IN SECTION 34, TOWNSHIP 24 SOUTH, RANGE 28 EAST  
ORANGE COUNTY, FLORIDA

**180th DISTRICT**  
As per an order of Court filed in the 180th District Court in Orange County, Florida on August 24, 2008, the Court has granted summary judgment in favor of the Plaintiff, World Gateway Plaza, LLC, and has entered a permanent injunction against the Defendant, Orange County Planning and Zoning Board, and the Orange County Board of Commissioners, regarding the rezoning of the subject property to R-10.

As per an order of Court filed in the 180th District Court in Orange County, Florida on August 24, 2008, the Court has granted summary judgment in favor of the Plaintiff, World Gateway Plaza, LLC, and has entered a permanent injunction against the Defendant, Orange County Planning and Zoning Board, and the Orange County Board of Commissioners, regarding the rezoning of the subject property to R-10.



**POINT OF COMMENCEMENT**  
MOST SOUTHERLY CORNER OF  
PARCELS 1 AND 2, LOTS 1 AND 2,  
AS SHOWN ON PLAT BOOK 57, PAGES 86 & 87

**NOTE**

The description of the boundaries of the site plan as set forth herein is for the purpose of describing the property which may ultimately be recorded as part of the Condominium in Orange County, Florida. This description is not to be construed as a warranty of the description of the property to be part of the Condominium, and to describe additional property not described herein to the property described herein.

- NOTES:**
- 1) THIS EXHIBIT HAS BEEN GRANTED AND RETURNED IN ARTICLE XIX OF THE DECLARATION OF CONDOMINIUM.
  - 2) THE DEVELOPER HAS RESERVED THE RIGHT TO GRANT OTHER EXHIBITS OVER THE CONDOMINIUM PROPERTY FROM TIME TO TIME.
  - 3) COMMON AREA UNIT, COMMON ELEMENT, LIMITED COMMON ELEMENT, AND OTHER TERMS.
  - 4) THE DEVELOPER HAS RESERVED THE RIGHT TO GRANT OTHER EXHIBITS OVER THE CONDOMINIUM PROPERTY FROM TIME TO TIME.
  - 5) THIS EXHIBIT HAS BEEN GRANTED AND RETURNED IN ARTICLE XIX OF THE DECLARATION OF CONDOMINIUM.
  - 6) PAGE 3000, PUBLIC RECORDS OF ORANGE COUNTY, FLORIDA.

**SOUTHERN CONNECTICUT**  
**STATE ROAD NO. 417**

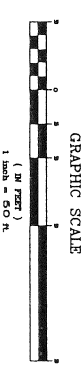
**Tinklepough**  
**SURVEY SERVICES, INC.**  
379 W. Madison Street, Suite 208 • Orlando, Florida 32806  
Ph: 407-422-9857 Fax: 407-422-9818  
LICENSED SURVEYOR No. 5778

ABBREVIATION LISTING

- |      |                            |
|------|----------------------------|
| REC  | RECORDED                   |
| CON  | CONCRETE                   |
| CM   | CONCRETE MASONRY           |
| PM   | PERMANENT                  |
| PLM  | PERMANENT REFERENCE        |
| PT   | POINT OF TRIANGULATION     |
| PI   | POINT OF INTERSECTION      |
| PLI  | POINT OF INTERSECTION OF   |
| PIC  | POINT OF CORNER OF         |
| N    | NORTH                      |
| E    | EAST                       |
| S    | SOUTH                      |
| R    | RANGE                      |
| AC   | AS-CENTRELINE              |
| CH   | CHORD BEARING AND DISTANCE |
| INT. | INTERSECTION               |
| OS   | ORANGE COUNTY DISK         |
| (B)  | BENCHMARK                  |

**NOTE**  
1) BEARINGS BASED ON THE CENTRIQUE OF INTERNATIONAL DRIVE,  
PER THE PLAT OF WORLD GATEWAY, PLAT BOOK 36, PAGES 86-91, AS  
BEING NORTH 85° 48' 28" WEST.

2) ELEVATIONS BASED ON ORANGE COUNTY DATUM, RESOLUTION A--713-  
003, ORANGE COUNTY DISK IN CONCRETE SLAB FOR "DISNEY" SIGN,  
ELEVATION = 96.50



I hereby certify that this Exhibit "A", Pages 1, and 2 is a correct representation of the improvements described herein and that the construction of such improvements is substantially complete so that such material together with the improvements shown hereon can be lawfully placed in the hands of the Condominium, as recorded in Official Records Book 8729, Page 4256, Public Records of Orange County, Florida, describing the condominium property, as amended in an accurate representation of the relative locations and dimensions of the improvements shown hereon. I further certify that this Exhibit "A" complies with the requirements for condominiums according to Chapter 718, Florida Statutes, and all rules promulgated pursuant thereto and unless it bears the signature and stamp of a duly licensed professional surveyor and is accompanied by this drawing, it shall not be a valid legal instrument.

For: Tinklepough Survey Services, Inc.  
Caryl H. Umholtz P.L.S.  
Florida Reg. C#1 No. 3317

Tinklepough  
Date: JAN 24 2008

FILE No. CX-7450

108 A19 B6/S1

# PHASE SIX WORLDQUEST RESORT, A CONDOMINIUM

LYING IN SECTION 34, TOWNSHIP 24 SOUTH, RANGE 28 EAST  
ORANGE COUNTY, FLORIDA

CONDOMINIUM BOOK \_\_\_\_\_  
PAGE \_\_\_\_\_

EXHIBIT "A"  
SHEET 2 OF 2

### BUILDING ADDRESS

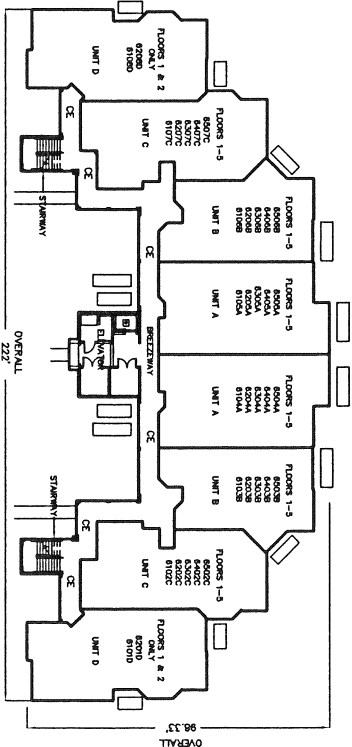
CE - DENOTES COMMON ELEMENT  
LCE - DENOTES LIMITED COMMON ELEMENT

FLOOR DESIGNATION UNIT LOCATION UNIT TYPE UNIT NUMBER

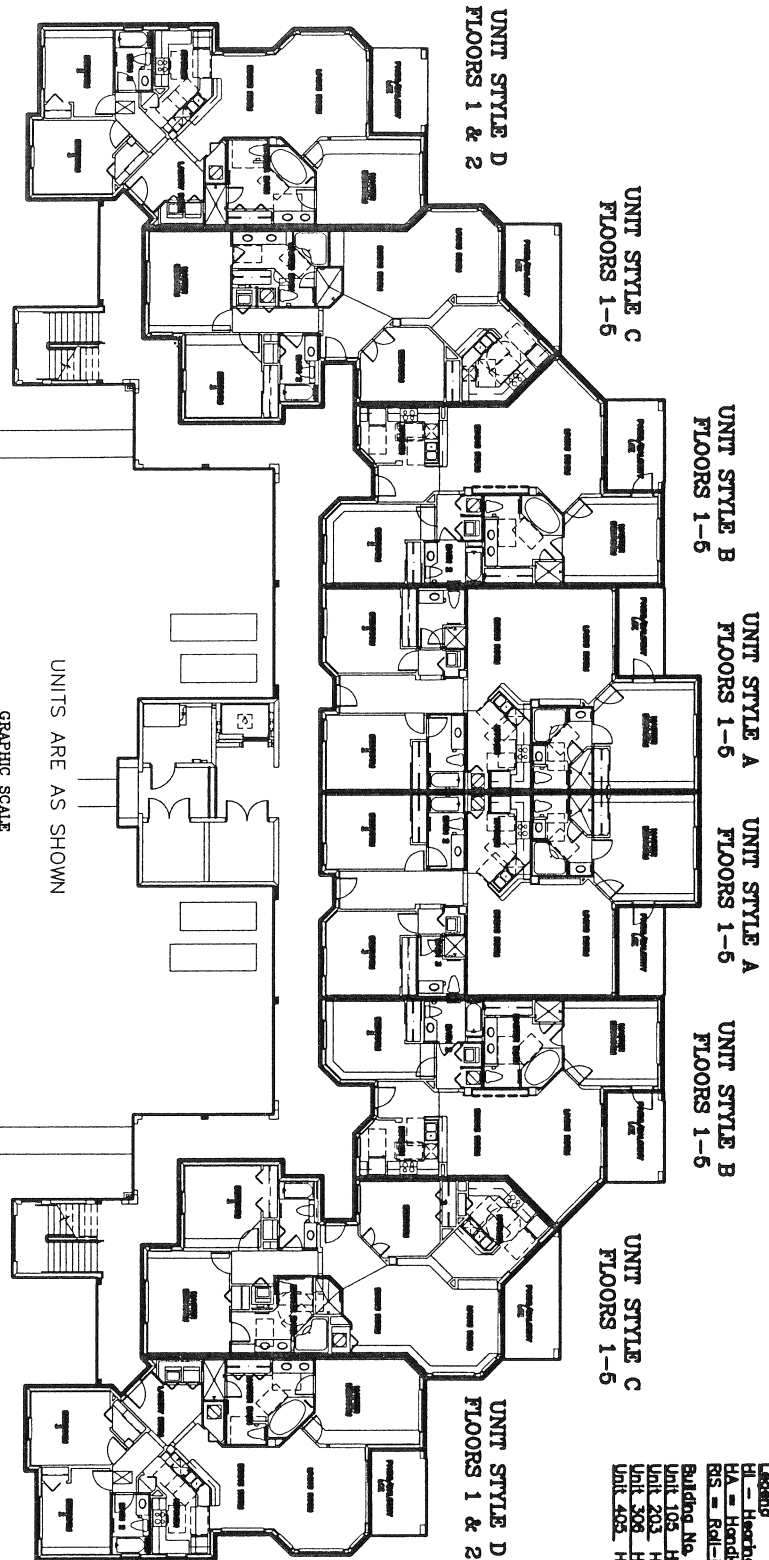
8 3 of A  
6 4 of A  
6 3 of A  
6 2 of A  
6 1 of A  
5 1 of A

### ELEVATIONS CHART

FLOOR	FLOOR GRADE	ELEVATION	CEILING SCOFF TOP	CEILING SCOFF BOTTOM
1	98.01	107.29	117.64	
2	107.85	117.13		
3	117.68	126.98		
4	127.51	136.78		
5	137.37	146.65		



FLOOR PLAN - NOT TO SCALE



UNITS ARE AS SHOWN

### GRAPHIC SCALE



Legend  
 HL - Hearing Impaired Unit  
 HA - Handicap Accessible Unit  
 RIS - Roll-in Shower in Unit

Building No. 6  
 Unit 105 HL, HA, RIS  
 Unit 202 HL  
 Unit 308 HL, HA  
 Unit 405 HL

Tinklepaugh  
 SURVEYING SERVICES, INC.  
 379 W. Michigan Street, Suite 208 • Orlando, Florida 32806  
 Tele. No. (407) 422-0967 Fax No. (407) 422-6915  
 LICENSED BUSINESS No. 9778