

PHASE EIGHT WORLDQUEST RESORT, A CONDOMINIUM

LYING IN SECTION 34, TOWNSHIP 24 SOUTH, RANGE 28 EAST
ORANGE COUNTY, FLORIDA

CONDOMINIUM BOOK _____
PAGE _____

EXHIBIT "A"
SHEET 1 OF 2

LEGAL DESCRIPTION

A parcel of land lying in the Southwest 1/4 of Section 34, Township 24 South, Range 28 East, being more particularly described as follows:

Commence at the most Southerly corner of Parcel 1, World Gateway Phase 4A, Plat Book 57, Page 88-87, Public Records of Orange County, Florida; thence run along the Northerly right-of-way line of the Southern Connector, State Road No. 417, North 85°54'37" East for a distance of 142.05 feet; thence run North 90°00'00" East, for a distance of 424.77 feet; thence leaving said right of way line run North 00°00'00" East, for a distance of 256.55 feet; thence North 11°48'10" West, for a distance of 85.42 feet to the POINT OF BEGINNING; thence South 89°34'41" West, for a distance of 199.28 feet; thence North 57°43'08" West, for a distance of 144.41 feet; thence North 22°52'46" East, for a distance of 164.39 feet; thence South 82°08'23" East, for a distance of 218.28 feet; thence South 11°48'10" East, for a distance of 201.52 feet to the Point of Beginning.

Containing 55,240.20 square feet or 1.268 acres, more or less.

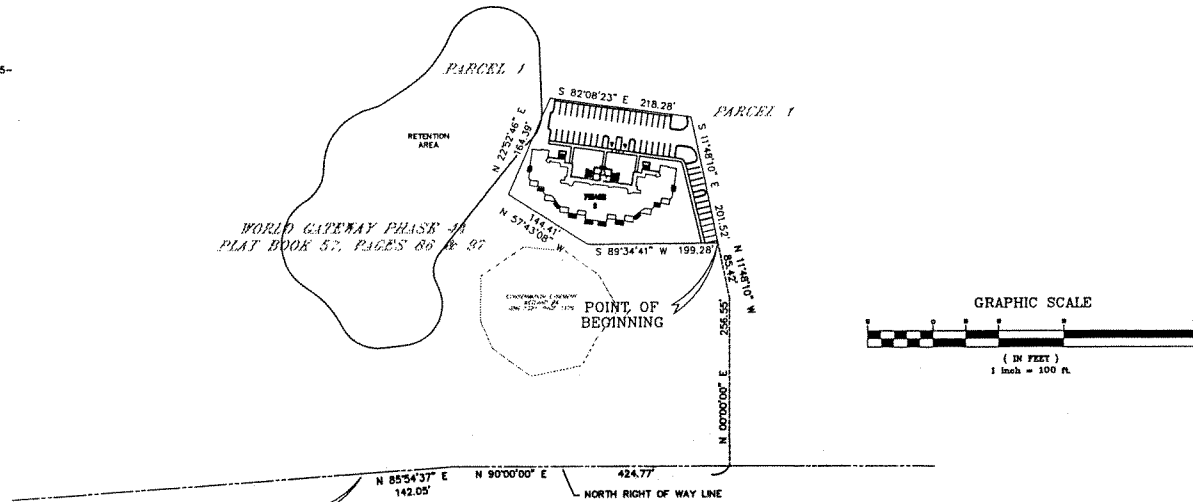
ABBREVIATION LISTING

REC	=	RECOVERED
IP	=	IRON PIPE
CM	=	CONCRETE MONUMENT
PCP	=	PERMANENT CONTROL POINT
PRM	=	PERMANENT REFERENCE MONUMENT
PC	=	POINT OF CURVATURE
PT	=	POINT OF TANGENCY
PI	=	POINT OF INTERSECTION
PRC	=	POINT OF REVERSE CURVATURE
PCC	=	POINT OF COMMON CURVATURE
N	=	NORTH
S	=	SOUTH
E	=	EAST
W	=	WEST
R	=	RADIUS
Δ	=	DELTA ANGLE
L	=	ARC LENGTH
CH. BRG.	=	CHORD BEARING AND DISTANCE
TB	=	TANGENT BEARING
GS	=	GEODETIC INFORMATION SYSTEM
(R)	=	RADIAL LOT LINE

NOTE

1.) BEARINGS BASED ON THE CENTERLINE OF INTERNATIONAL DRIVE, PER THE PLAT OF WORLD GATEWAY, PLAT BOOK 38, PAGES 89-91, AS BEING NORTH 85° 48' 28" WEST.

2.) ELEVATIONS BASED ON ORANGE COUNTY DATUM, DESIGNATION #L-715-003, ORANGE COUNTY DISK IN CONCRETE SLAB FOR "DISNEY" SIGN, ELEVATION = 96.60



POINT OF BEGINNING
MOST SOUTHERLY CORNER OF
PARCEL 1, WORLD GATEWAY PHASE
4A, PLAT BOOK 57, PAGES 88-87

NOTE

The description of the boundaries of the site plan as set forth herein is for the purpose of describing the property which may ultimately be declared as part of the Condominium in phases. However, the Developer reserves all rights to declare all or any portion or portions of the property to be part of the Condominium and to declare additional property not described herein to be part of the Condominium, whether or not such additional property is contiguous to the property described herein.

NOTES:

- 1.) VARIOUS EASEMENTS HAVE BEEN GRANTED AND RETAINED IN ARTICLE XIV OF THE DECLARATION OF CONDOMINIUM.
- 2.) THE DEVELOPER HAS RESERVED THE RIGHT TO GRANT OTHER EASEMENTS OVER THE CONDOMINIUM PROPERTY FROM TIME TO TIME.
- 3.) SEE ARTICLES I & IV OF THE DECLARATION OF CONDOMINIUM FOR THE DEFINITION AND/OR DESCRIPTION OF "UNIT", "COMMERCIAL UNIT", "COMMON ELEMENT", "LIMITED COMMON ELEMENT" AND OTHER TERMS.
- 4.) BALCONIES AND PATIOS IN UNITS ARE LIMITED COMMON ELEMENTS.
- 5.) SUBJECT TO THE MASTER DECLARATION OF COVENANTS, CONDITIONS AND RESTRICTIONS RECORDED IN OFFICIAL RECORDS BOOK 8739, PAGE 1306, PUBLIC RECORDS OF ORANGE COUNTY, FLORIDA.

Tinklepaugh
SURVEYING SERVICES, INC.
379 W. Michigan Street, Suite 208 • Orlando, Florida 32808
Tele. No. (407) 482-0907 Fax No. (407) 482-0915
LICENSED BUSINESS No. 3778

I hereby certify that this Exhibit "A", Pages 1, and 2 is a correct representation of the improvements described hereon and that the construction of such improvements is substantially complete so that such material together with the provisions of the Declaration of Condominium of Worldquest Resort, A Condominium, as recorded in Official Records Book 8739, Page 4256, Public Records of Orange County, Florida, describing the condominium property, as amended is an accurate representation of the relative locations and dimensions of the improvements and the identification, relative location and approximate dimensions of each unit and location of common elements for this phase as can be determined from those materials. I further certify that this Exhibit "A" complies with the Minimal Technical Standards of Surveys set forth in Rule 81017-6, F.A.C. and the survey requirements for condominiums according to Chapter 718, Florida Statutes, and all rules promulgated pursuant thereto and unless it bears the signature and the original raised seal of a Florida Licensed Surveyor and Mapper, this drawing, sketch, plat or map is for informational purposes only and is not valid.

For: Tinklepaugh Surveying Services, Inc.

Gerald F. Livermore P.L.S.
Florida Reg. Cert. No. 3517

Date _____

T07 C11 B8 S1

FILE No. CX-7450

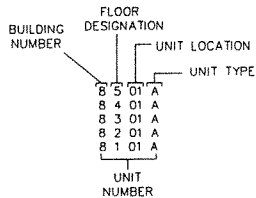
PHASE EIGHT WORLDQUEST RESORT, A CONDOMINIUM

LYING IN SECTION 34, TOWNSHIP 24 SOUTH, RANGE 28 EAST
ORANGE COUNTY, FLORIDA

CONDOMINIUM BOOK _____
PAGE _____

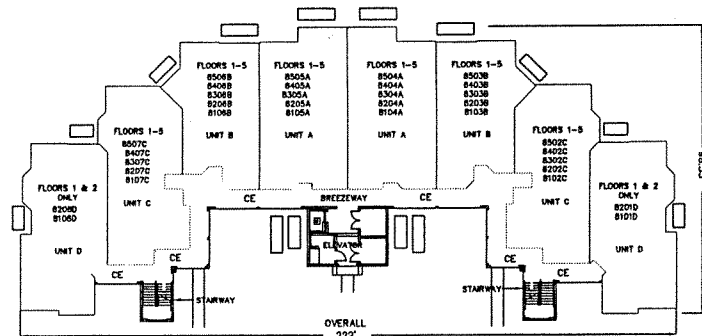
EXHIBIT "A"
SHEET 2 OF 2

BUILDING ADDRESS
CE - DENOTES COMMON ELEMENT
LCE - DENOTES LIMITED COMMON ELEMENT

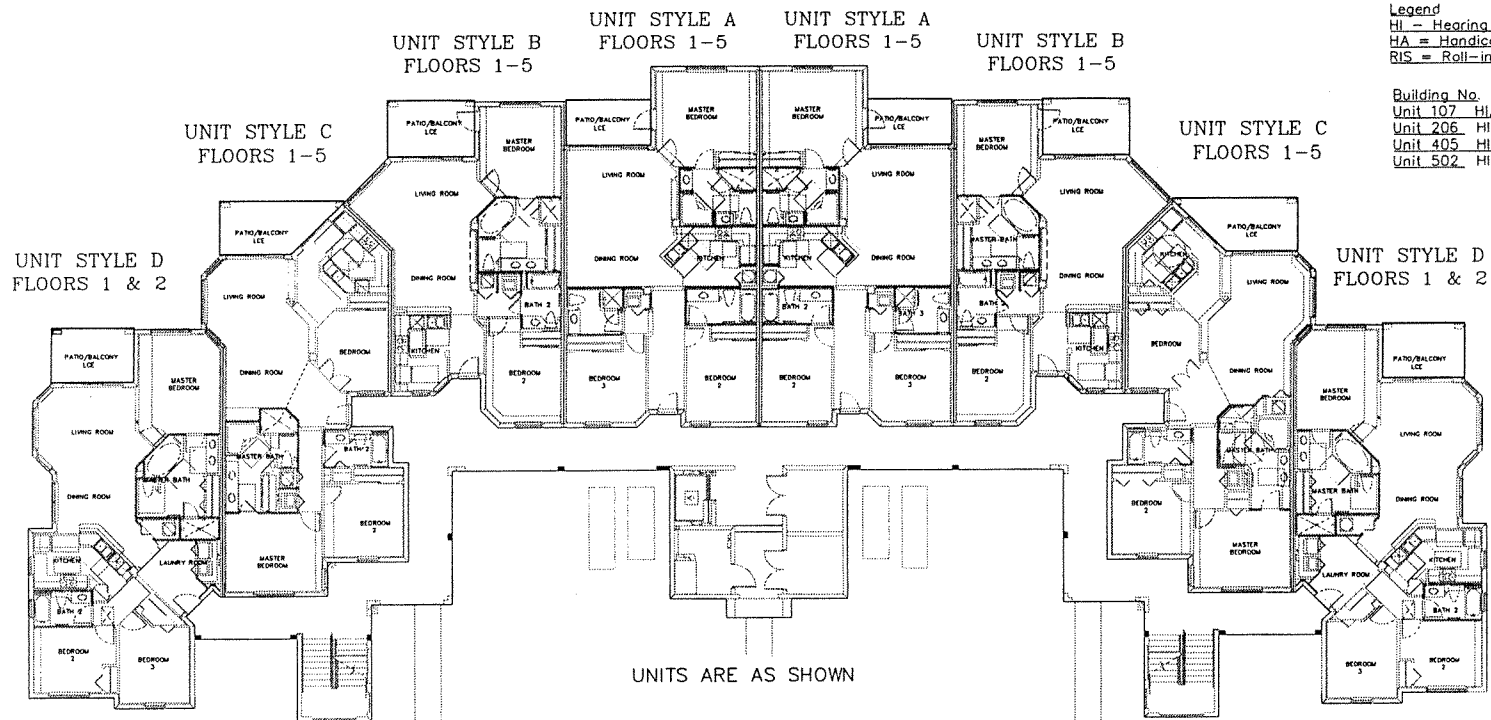


ELEVATIONS CHART

FLOOR NUMBER	ELEVATIONS		
	FLOOR	CEILING	DECK CEILING
1			
2			
3			
4			
5			



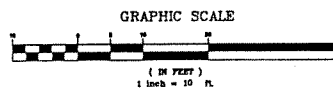
FLOOR PLAN - NOT TO SCALE



Legend
HI - Hearing Impaired Unit
HA = Handicap Accessible Unit
RIS = Roll-in Shower in Unit

Building No. 8
Unit 107 HI, HA, RIS
Unit 206 HI
Unit 405 HI, HA
Unit 502 HI

UNITS ARE AS SHOWN



Tinklepaugh
SURVEYING SERVICES, INC.
379 W. Michigan Street, Suite 208 • Orlando, Florida 32806
Tele. No. (407) 422-0957 Fax No. (407) 422-8915
LICENSED BUSINESS No. 3778