

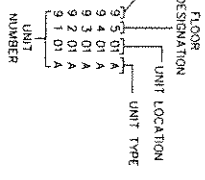
PHASE NINE WORLDQUEST RESORT, A CONDOMINIUM

LYING IN SECTION 34, TOWNSHIP 24 SOUTH, RANGE 28 EAST
ORANGE COUNTY, FLORIDA

CONDOMINIUM BOOK _____
PAGE _____
EXHIBIT "A"
SHEET 2 OF 2

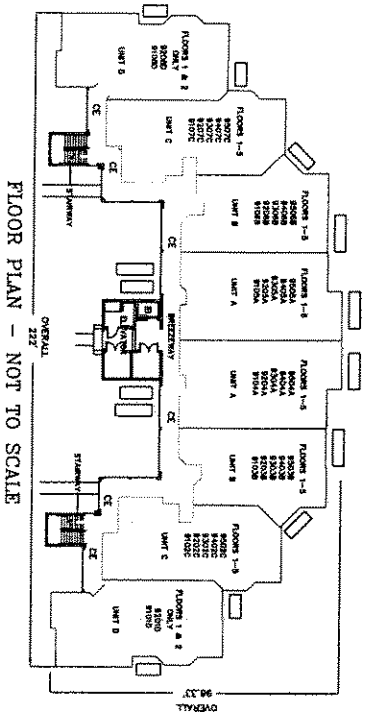
BUILDING ADDRESS

CE - DENOTES COMMON ELEMENT
LCE - DENOTES LIMITED COMMON ELEMENT

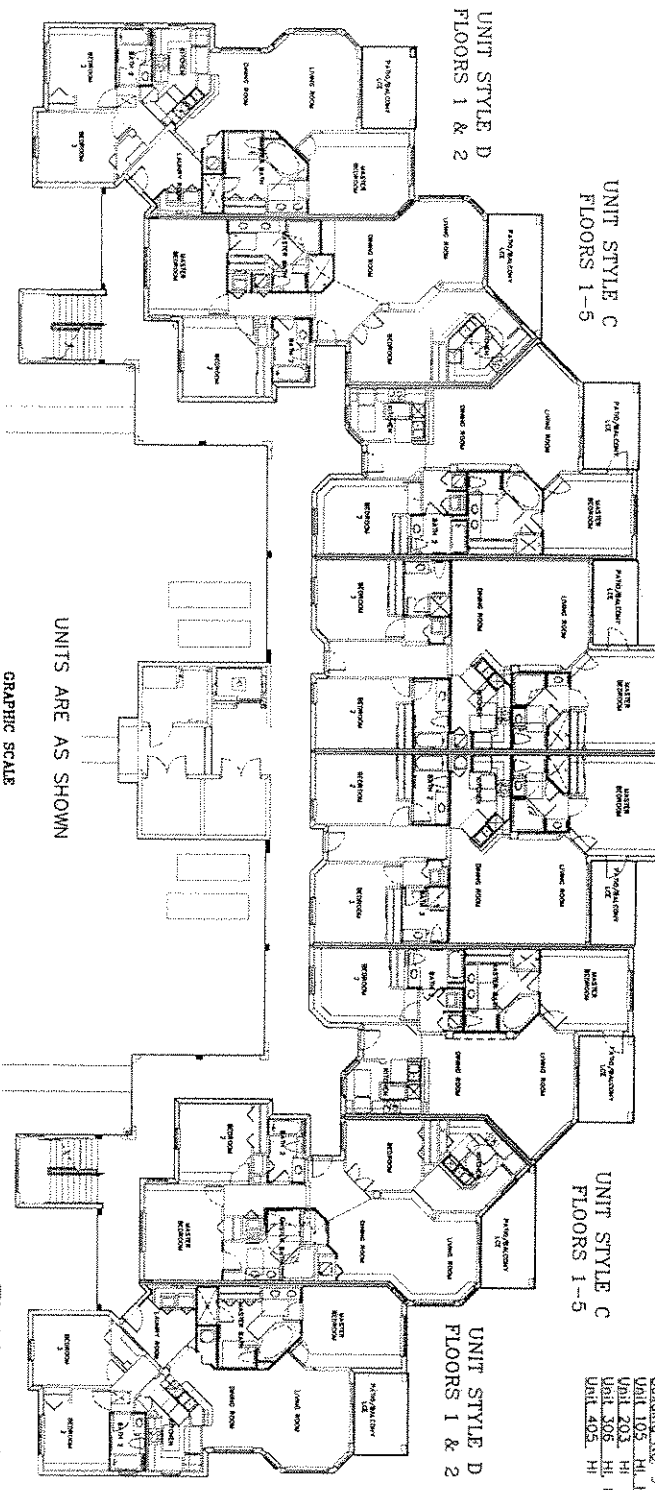


ELEVATIONS CHART

FLOOR	ELEVATION	FIN. FLOOR	FIN. CEILING
1			
2			
3			
4			
5			



UNIT STYLE A FLOORS 1-5
 UNIT STYLE B FLOORS 1-5
 UNIT STYLE C FLOORS 1-5
 UNIT STYLE D FLOORS 1 & 2



UNITS ARE AS SHOWN



Legend
 HL - Hearing Impaired Unit
 HA - Hearing Accessible Unit
 RIS - Roll-in Shower in Unit

Building No. 9
 Unit 105 HL HA RIS
 Unit 201 HI
 Unit 306 HI HA
 Unit 405 HI

Tinklepaugh
 SURVEYING SERVICES, INC.
 378 W. Michigan Street, Suite 208 • Orlando, Florida 32806
 Tel. No. (407) 422-0897 Fax No. (407) 422-0915
 LICENSED BUSINESS NO. 3778