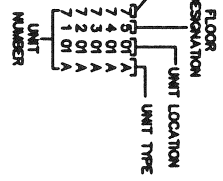


PHASE SEVEN WORLDQUEST RESORT, A CONDOMINIUM

LYING IN SECTION 34, TOWNSHIP 24 SOUTH, RANGE 28 EAST
ORANGE COUNTY, FLORIDA

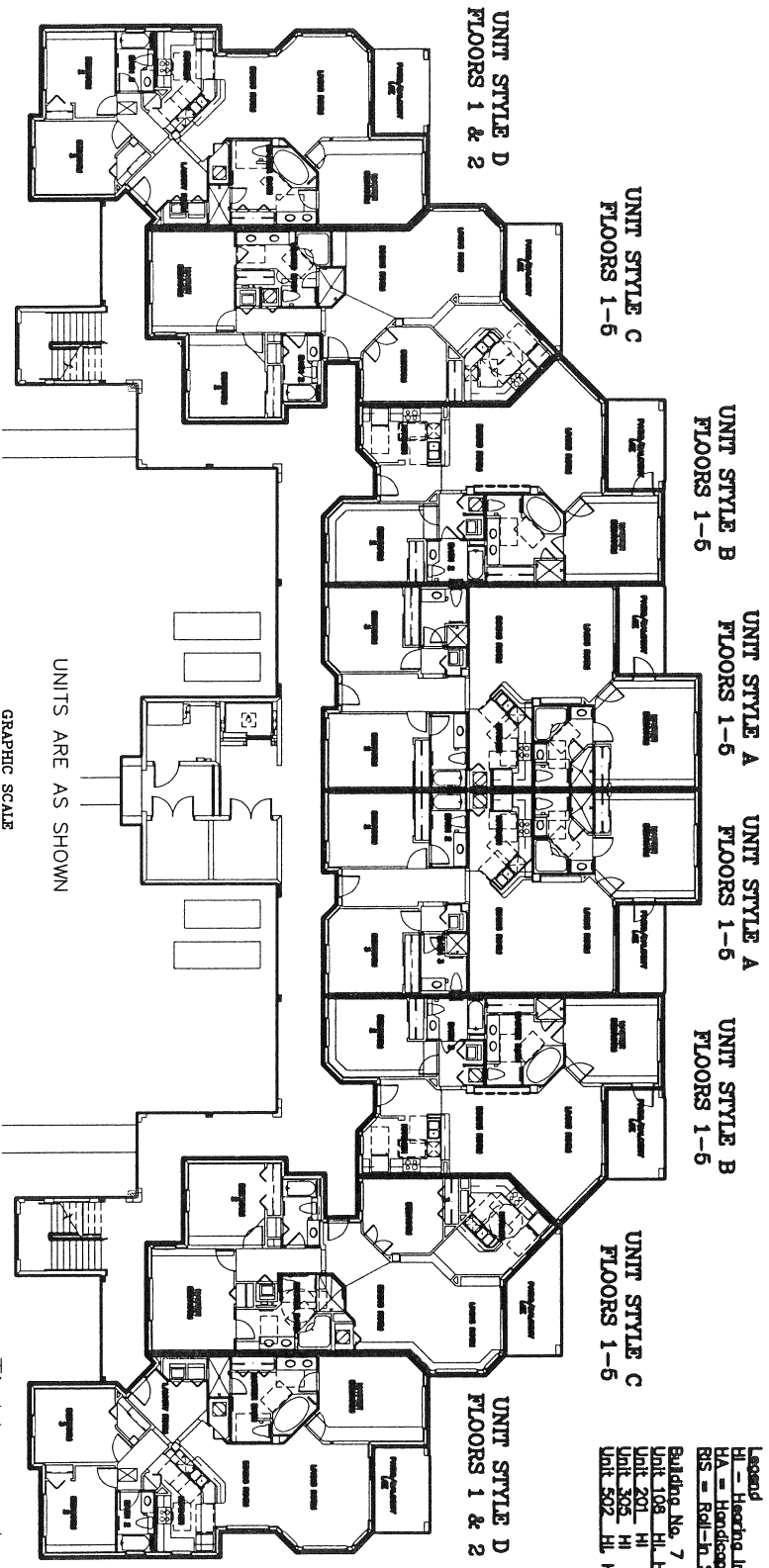
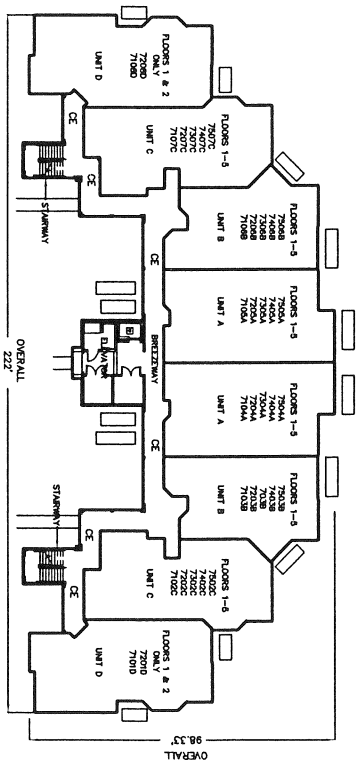
EXHIBIT "A"
SHEET 2 OF 2

BUILDING ADDRESS
CE - DENOTES COMMON ELEMENT
LCE - DENOTES LIMITED COMMON ELEMENT



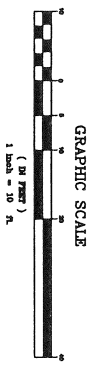
ELEVATIONS CHART

FLOOR	FLOOR ELEVATION	CEILING ELEVATION	FLOOR FINISH TO TOP OF UNIT SLAB
1	98.11	106.39	117.75
2	107.96	117.24	127.06
3	117.78	127.06	136.57
4	127.29	146.70	



Legend
 HI - Hardwood Insulated Unit
 HA - Hardwood Accessible Unit
 RS - Roll-In Shower in Unit

Building No. 7
 Unit 108 HI HA RS
 Unit 201 HI
 Unit 305 HI
 Unit 502 HI HA



Tinklepaugh
SURVEYING SERVICES, INC.
379 W. Michigan Street, Suite 208 • Orlando, Florida 32806
Tel. No. (407) 422-0957 Fax No. (407) 422-0915
LICENSED BUSINESS No. 9778