



INSTR 20070616393
 OR BK 09435 PG 0570 PGS=6
 MARTHA O. HAYNIE, COMPTROLLER
 ORANGE COUNTY, FL
 09/14/2007 12:54:04 PM
 REC FEE 52.50

This instrument prepared by
 and return to:

Derek A. Kurtz, Esquire
 Jordan Development Group, LLC
 1085 W. Morse Blvd., Suite C
 Winter Park, Florida 32789
 (407) 699-1118

**SECOND AMENDMENT TO
 DECLARATION OF CONDOMINIUM OF
 WORLDQUEST RESORT, A CONDOMINIUM
 ADDING PHASE FIVE**

THIS SECOND AMENDMENT TO DECLARATION OF CONDOMINIUM OF
 WORLDQUEST RESORT, A CONDOMINIUM ("**Second Amendment**") is made as of this
13 day of September, 2007, by WORLDQUEST RESORT PARTNERS, L.L.C., a Florida
 limited liability company ("**WRP**").

WITNESSETH

WHEREAS, WRP is the Developer ("**Developer**") described in that certain Declaration
 of Condominium of WORLDQUEST RESORT, A CONDOMINIUM recorded July 7, 2006, in
 Official Records Book 8739, Page 4258, as amended by that certain First Amendment to
 Declaration of Condominium of Worldquest Resort, A Condominium, recorded August 7, 2007,
 in Official Records Book 9383, Page 429, all of the Public Records of Orange County, Florida
 ("**Condominium Declaration**"); and

WHEREAS, Developer was the owner and holder of all of the Condominium Property
 delineated on and submitted to condominium form of ownership pursuant to Schedule 1 of said
 Declaration on the date of the execution and recording of the Condominium Declaration, and all
 Condominium Property described in amendments made thereto, and is the present owner and
 holder of the Condominium Property described on the Second Amendment to Schedule 1,
 attached hereto and incorporated into this Second Amendment, and which Condominium
 Property is in the aggregate designated Phase Five; and

WHEREAS, Developer wishes to submit Phase Five to condominium ownership and to
 be added to the Condominium in accordance with the provisions of Article III of the Declaration
 of Condominium and with the requirements of Chapter 718, *Florida Statutes* ("**Condominium
 Act**").

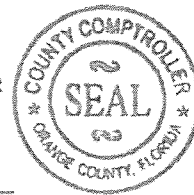
NOW THEREFORE, in consideration of the foregoing, the Declaration of
 Condominium is hereby amended as set forth herein.

077342, 000004, 101825355 1

State of FLORIDA, County of ORANGE
 I hereby certify that this is a true copy of
 the document as reflected in the Official Records.
 MARTHA O. HAYNIE, COUNTY COMPTROLLER

By: C. N. [Signature]
 Deputy Comptroller

Dated: Sept 14, 2007



1. **Recitals.** The foregoing recitals are true and correct and are incorporated herein by this reference.

2. **Effective Date.** The Effective Date of this Amendment shall be determined as set forth in Article III of the Declaration of Condominium.

3. **Amendment.**

a. Developer does hereby declare and submit to condominium ownership the Property described as Phase Five including, without limitation, the following Unit Numbers: 5101D, 5102C, 5103B, 5104A, 5105A, 5106B, 5107C, 5108D, 5201D, 5202C, 5203B, 5204A, 5205A, 5206B, 5207C, 5208D, 5302C, 5303B, 5304A, 5305A, 5306B, 5307C, 5402C, 5403B, 5404A, 5405A, 5406B, 5407C, 5502C, 5503B, 5504A, 5505A, 5506B, 5507C, and Second Amendment to Schedule 1 to the Condominium Declaration, consisting of the legal description, survey and plot plan and graphic description for Phase Five which is attached hereto and incorporated herein, making said Phase Five a part of the Condominium and of the Condominium Property of Worldquest Resort, A Condominium.

b. The ownership interest in Common Elements, Common Surplus and Common Expenses, attributable to each Unit on the addition of Phase Five subsequent to the execution and filing of this Amendment, is 1/170th or .588 percent (.588%), which has been computed based upon the formula as set forth on Schedule 2 to the Condominium Declaration, appearing in Official Records Book 8739, Page 4312, Public Records of Orange County, Florida.

4. **Capitalized Terms.** All capitalized terms shall have the same meanings as defined in the Condominium Declaration unless otherwise defined herein.

5. **No Other Changes.** Except as expressly modified herein, all other provisions of the Condominium Declaration are hereby ratified and confirmed.

6. **Owner Acceptance and Ratification.** By acquisition of title to a Unit or Units subject to the Condominium Declaration as amended by this Amendment, each Unit Owner thereby irrevocably ratifies, approves and affirms all provisions of the Condominium Declaration, as modified by this Second Amendment.

(REMAINDER OF PAGE INTENTIONALLY LEFT BLANK.)

IN WITNESS WHEREOF, the Developer has caused the foregoing Second Amendment to Declaration of Condominium to be executed by its undersigned, duly authorized signatory on the date set forth above.

WITNESSES:

WORLDQUEST RESORT PARTNERS, L.L.C., a Florida limited liability company

[Handwritten Signature]

Signature of Witness

LORI HIRT

Print Name of Witness

[Handwritten Signature]

Signature of Witness

Cheryl L. Egger

Print Name of Witness

By: *[Handwritten Signature]*

Gregory D. Lee

Its: Manager

STATE OF FLORIDA)

COUNTY OF Orange) ss.

The foregoing instrument was acknowledged before me this 13 day of September, 2007, by Gregory D. Lee, Manager of WORLDQUEST RESORT PARTNERS, L.L.C., a Florida limited liability company, who is () personally known to me, or () who has produced _____ as identification.

[Handwritten Signature]

(NOTARY PUBLIC)

LORI HIRT

(Print Name of Notary Public)

(NOTARY SEAL)

Commission No. _____

My Commission Expires: _____



SECOND AMENDMENT
TO
SCHEDULE 1:

EXHIBIT TO SECOND AMENDMENT TO DECLARATION OF CONDOMINIUM
(Schedule 1 to the Declaration of Condominium is amended to include the following
additional Phase)

WORLDQUEST RESORT,
A CONDOMINIUM

PHASE FIVE: Legal Description, Site Plans, Floor Plans

PHASE FIVE
WORLDQUEST RESORT, A CONDOMINIUM
 LYING IN SECTION 34, TOWNSHIP 24 SOUTH, RANGE 28 EAST
 ORANGE COUNTY, FLORIDA

CONDOMINIUM BOOK _____
 PAGE _____

EXHIBIT "A"
 SHEET 1 OF 2

LEGAL DESCRIPTION

A parcel of land lying in the Southwest 1/4 of Section 34, Township 24 South, Range 28 East, being more particularly described as follows:

Commence at the most southerly corner of Parcel 1, World Gateway Phase 4A, Plat Book 57, Page 86-87, Public Records of Orange County, Florida; thence run along the Northern right-of-way line of the Southern Connector, State Road No. 417, North 85°54'37" East for a distance of 142.05 feet; thence run North 90°00'00" East, for a distance of 215.19 feet to the POINT OF BEGINNING; thence North 00°00'00" East, for a distance of 111.77 feet; thence North 43°24'18" East, for a distance of 32.97 feet; thence North 19°06'30" East, for a distance of 109.25 feet; thence North 20°30'16" West, for a distance of 82.37 feet; thence North 57°43'00" West, for a distance of 43.44 feet; thence North 89°24'41" East, for a distance of 216.74 feet; thence South 00°00'00" East, a distance of 340.30 feet to a point on said Northernly Right of Way line of State Road No. 417; thence North 90°00'00" West, for a distance of 209.58 feet to the POINT OF BEGINNING.

Containing 63047.249 square feet or 1.45 acres, more or less.

NOTES

1.) BEARINGS BASED ON THE CENTERLINE OF INTERNATIONAL DRIVE, PER THE PLAT OF WORLD GATEWAY, PLAT BOOK 38, PAGES 89-91, AS BORN NORTH 83°45'28" WEST.

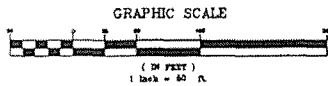
2.) ELEVATIONS BASED ON ORANGE COUNTY DATUM, DESIGNATION #L-715-003, ORANGE COUNTY DISK IN CONCRETE SLAB FOR "DISNEY" SIGN, ELEVATION = 96.60

LEGEND

- ☐ POWER TRANSFORMER
- TELEPHONE RISER
- HANDICAP SIGN
- ⊙ POWER BOX
- LIGHT POLE
- GRATE INLET
- ⊙ SANITARY MANHOLE
- ⊕ FIRE HYDRANT
- CE COMMON ELEMENTS
- ⊕ WATER VALVE
- SCV Δ SPRINKLER CONTROL VALVE
- ⊕ FIRE CONNECTION

NOTE:

ALL CORNERS RECOVERED OR SET WITH 1" IRON PIPE NAIL AND DISK LB#3778



POINT OF COMMENCEMENT
 MOST SOUTHERLY CORNER OF
 PARCEL 1, WORLD GATEWAY PHASE
 4A, PLAT BOOK 57, PAGES 86-87

NOTE

The description of the boundaries of the site plan as set forth herein is for the purpose of describing the property which may ultimately be declared as part of the Condominium in phases. However, the Developer reserves all rights to declare all or any portion or portions of the property to be part of the Condominium and to declare additional property not described herein to be part of the Condominium, whether or not such additional property is contiguous to the property described herein.

NOTES

- 1.) SURVEY EASEMENTS HAVE BEEN DRAWN AND RETAINED IN ARTICLE 5TH OF THE DECLARATION OF CONDOMINIUM.
- 2.) THE DEVELOPER HAS RESERVED THE RIGHT TO GRANT OTHER EASEMENTS OVER THE CONDOMINIUM PROPERTY FROM TIME TO TIME.
- 3.) SEE ARTICLES 1, 8, 11, 14 OF THE DECLARATION OF CONDOMINIUM FOR THE DEFINITION AND/OR DESCRIPTION OF "UNIT", "COMMERCIAL UNIT", "COMMON ELEMENT", "LIMITED COMMON ELEMENT" AND OTHER TERMS.
- 4.) BALCONIES AND PATIOS IN UNITS ARE LIMITED COMMON ELEMENTS.
- 5.) SUBJECT TO THE MASTER DECLARATION OF EASEMENTS, CONDITIONS AND RESTRICTIONS RECORDED IN OFFICIAL RECORDS BOOK 8738, PAGE 4356, PUBLIC RECORDS OF ORANGE COUNTY, FLORIDA.

PARCEL 1

WORLD GATEWAY PHASE 4A
 PLAT BOOK 57, PAGES 86 & 87

WORLD GATEWAY PHASE 4A
 PLAT BOOK 57, PAGES 86 & 87

PARCEL 1

WORLD GATEWAY PHASE 4A
 PLAT BOOK 57, PAGES 86 & 87
 PARCEL 1

POINT OF BEGINNING

SOUTHERN CONNECTOR
 STATE ROAD NO. 417

Tinklepaugh
 SURVEYING SERVICES, INC.

379 W. Main Street, Suite 208 • Orlando, Florida 32808
 Tel. No. (407) 422-0987 Fax No. (407) 422-0915
 LICENSED SURVEYOR No. 5778

I hereby certify that this Exhibit "A", Pages 1, and 2 is a correct representation of the improvements described herein and that the construction of such improvements is substantially complete, so that such material together with the provisions of the Declaration of Condominium of Worldquest Resort, A Condominium, as recorded in Official Records Book 8738, Page 4224, Public Records of Orange County, Florida, describing the condominium property, as amended is an accurate representation of the relative locations and dimensions of the improvements and the identification, relative location and approximate dimensions of each unit and location of common elements for this phase, as can be determined from those materials. I further certify that this Exhibit "A" complies with the Minimum Technical Standards of Survey set forth in Rule 61017-6, F.A.C. and the survey requirements for condominiums according to Chapter 718, Florida Statutes, and all rules promulgated pursuant thereto and unless it bears the signature and the original raised seal of a Florida Licensed Surveyor and Mapper, this drawing, sketch, plat or map is for informational purposes only and is not valid.

For: Tinklepaugh Surveying Services, Inc.

David F. Linnoble
 David F. Linnoble PLS.
 Florida Reg. Cert. No. 3317

AUGUST 20, 2007
 Date

T07 D52 B5 S1
 REVISED LEGAL SEPT. 4, 2007

FILE No. CX-7450

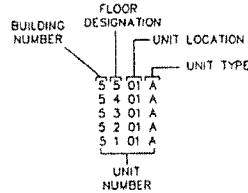
PHASE FIVE WORLDQUEST RESORT, A CONDOMINIUM

LYING IN SECTION 34, TOWNSHIP 24 SOUTH, RANGE 28 EAST
ORANGE COUNTY, FLORIDA

CONDOMINIUM BOOK _____
PAGE _____

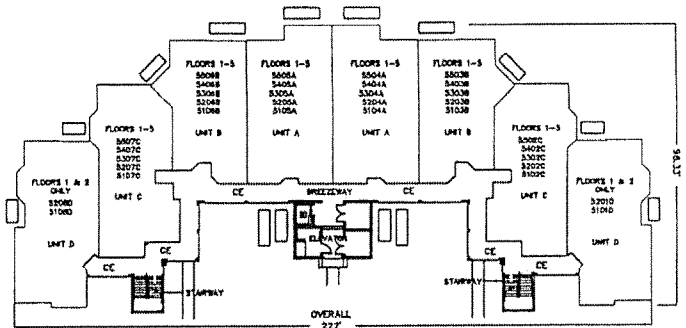
EXHIBIT "A"
SHEET 2 OF 2

BUILDING ADDRESS
CE - DENOTES COMMON ELEMENT
LCE - DENOTES LIMITED COMMON ELEMENT

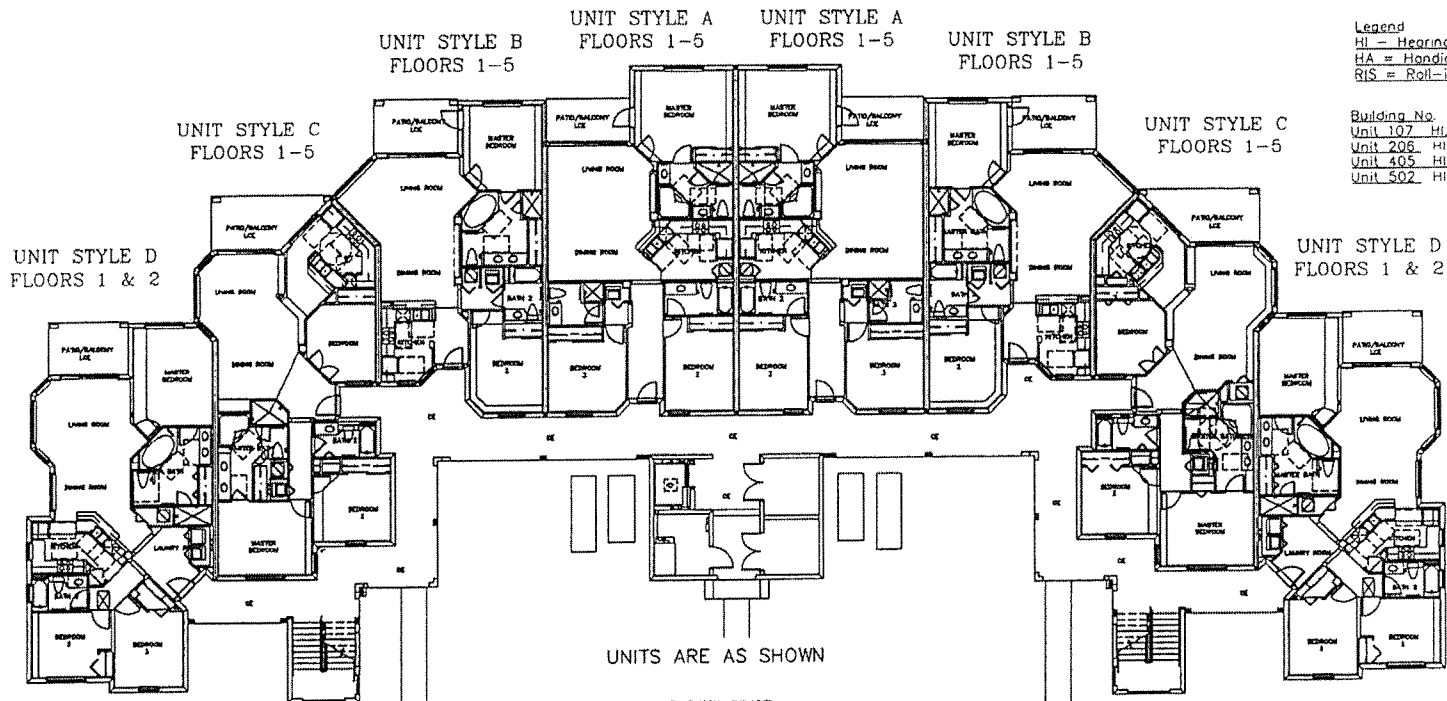


ELEVATIONS CHART

FLOOR SLABS	ELEVATIONS		
	FLOOR	CEILING	CEILING SECOND FLOOR OFFICE UNIT ONLY
1	97.08	106.36	
2	107.89	117.24	117.78
3	117.84	127.09	
4	127.65	136.90	
5	137.41	146.58	

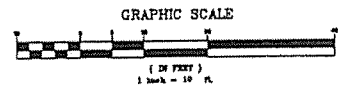


FLOOR PLAN - NOT TO SCALE



Legend
HI - Hearing Impaired Unit
HA - Handicap Accessible Unit
RIS - Roll-in Shower in Unit

Building No. 5
Unit 107 HI, HA, RIS
Unit 206 HI
Unit 405 HI, HA
Unit 502 HI



Tinklepaugh
SURVEYING SERVICES, INC.
379 W. Michigan Street, Suite 208 • Orlando, Florida 32806
Tele. No. (407) 422-0967 Fax No. (407) 422-6915
LICENSED BUSINESS No. 3776